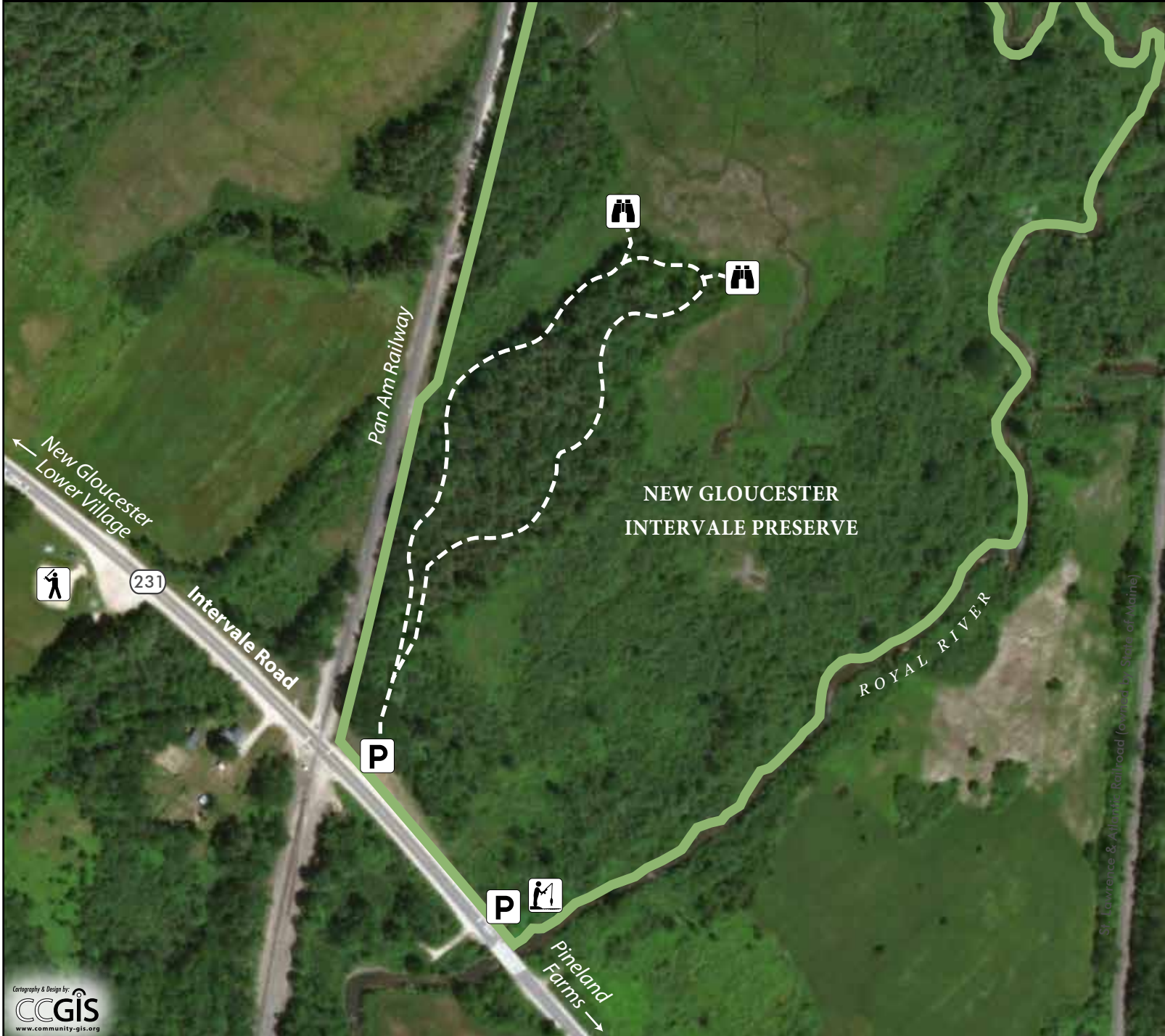




New Gloucester Intervale Preserve



PRESERVE USES:

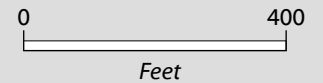


COMMUNITY: New Gloucester

GETTING THERE: The trailhead is on Intervale Road, one mile south of Cobb's Bridge Road, or one quarter mile north of Woodman Road. Look for a kiosk with a blue sign and grassy parking on the shoulder of the road.

WATER ACCESS: This section of the Royal River is suitable only for informed boaters paddling either upstream or downstream due to variable water levels, trees, and beaver dams blocking passage. When paddling please respect private land owners signage along the river regarding fiddlehead harvest.

CAUTION: Walking on railroad tracks is strictly prohibited by law.



Contour interval: 10 ft

January 2018



Royal River Conservation Trust
P.O. Box 90 Yarmouth, ME 04096
www.RRCT.org