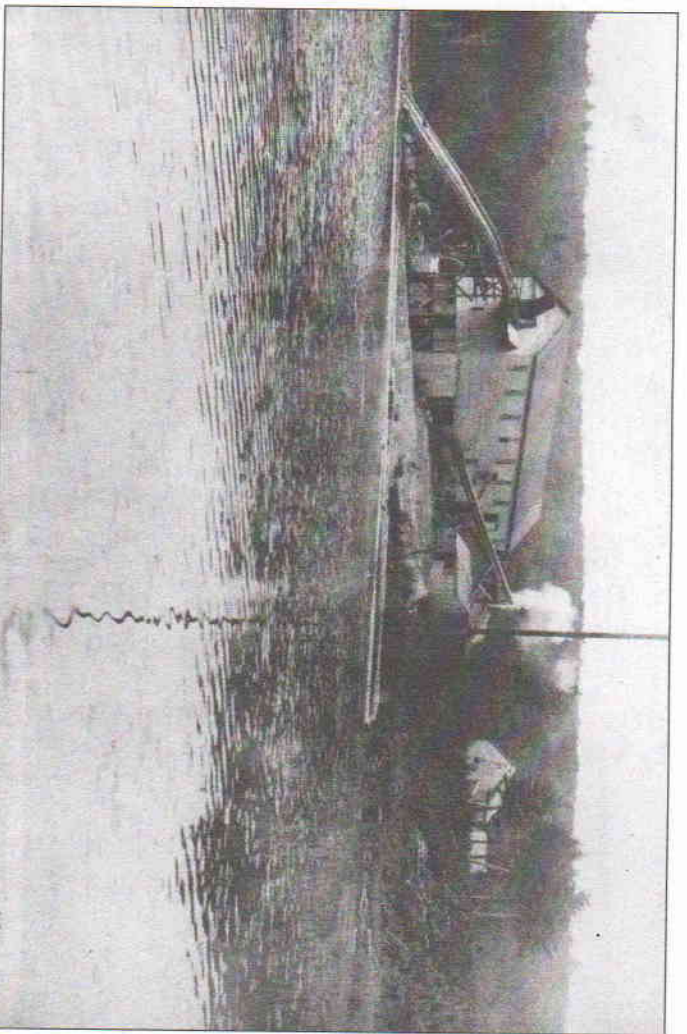




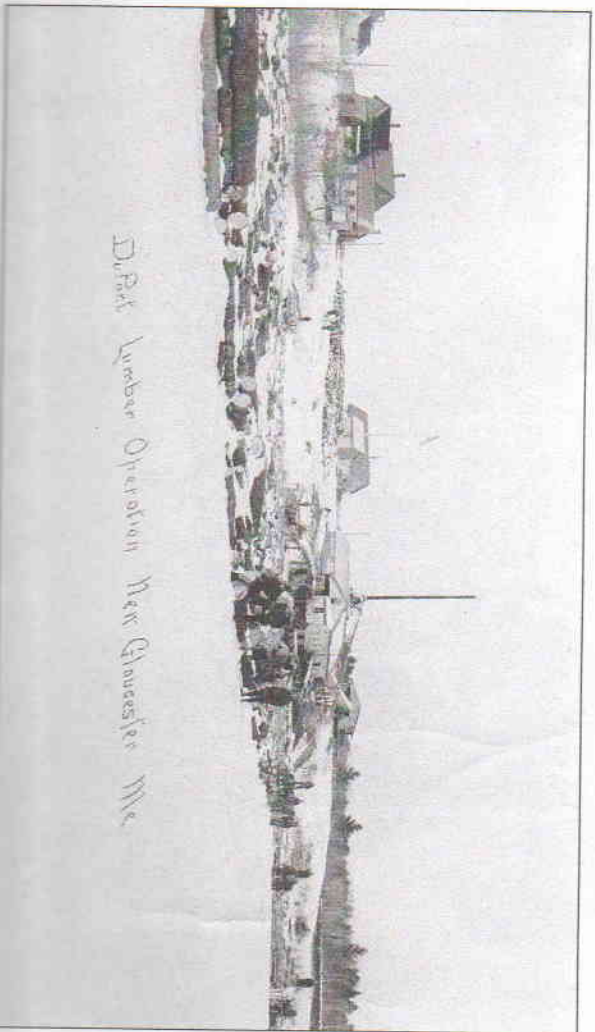
IMAGES
of America

NEW GLOUCESTER

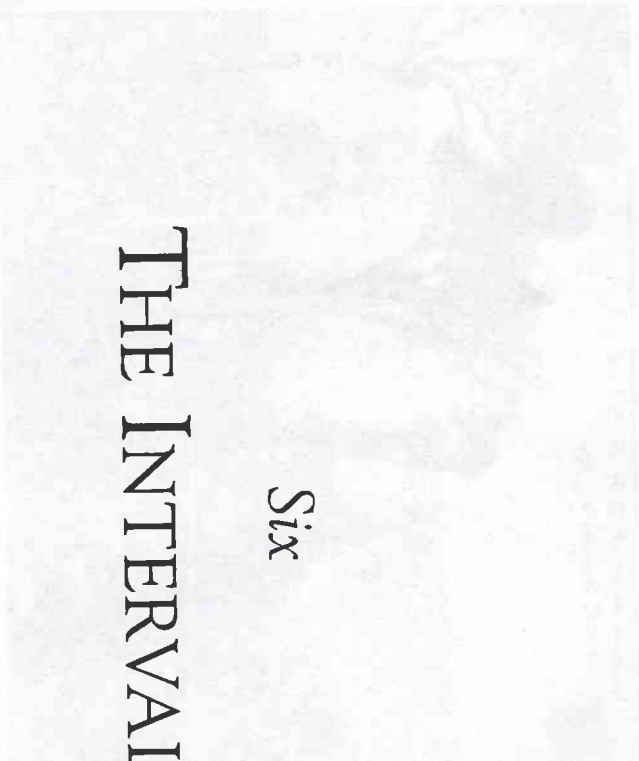
Thomas P. Blake
and the New Gloucester Historical Society



Here is Chandler Mill in operation. The mill was run by stream, as there was no stream to power it. Timber was cut in the winter, and logs were skidded to the frozen pond and stored on the ice until spring. On April 7, 1927, the two mills burned flat.

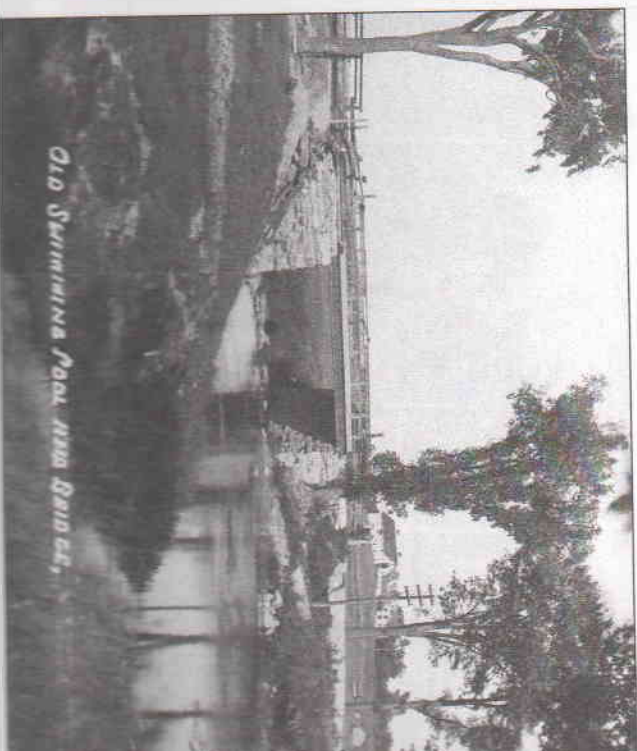


D. P. Pelt Lumber Operation Near Gloucester, Me.



Six

THE INTERVAL



Old Swimming Pool near Gloucester,